

KEEP YOUR DISTANCE

Keep a minimum distance of 50m from docks, swimming areas and the shore.

The waves caused by your boat damage docks, boats and shorelines.

Respect the privacy of local residents. If you can make eye contact, you are too close.



RECOMMENDED BOAT SIZE FOR A NARROW LAKE LIKE BARK LAKE IS: 18 FT OR LESS

MAXIMUM POWER
MAX 140 HP FOR INBOARDS
MAX 100 HP FOR OUTBOARDS

MAXIMUM SPEED ON THE LAKE: 50KM/H



NO WAKE BOATS
NO CABIN CRUISERS
NO JET SKIS

WATER SPORTS

Water sports are permitted from 10 am to 7 pm ONLY.

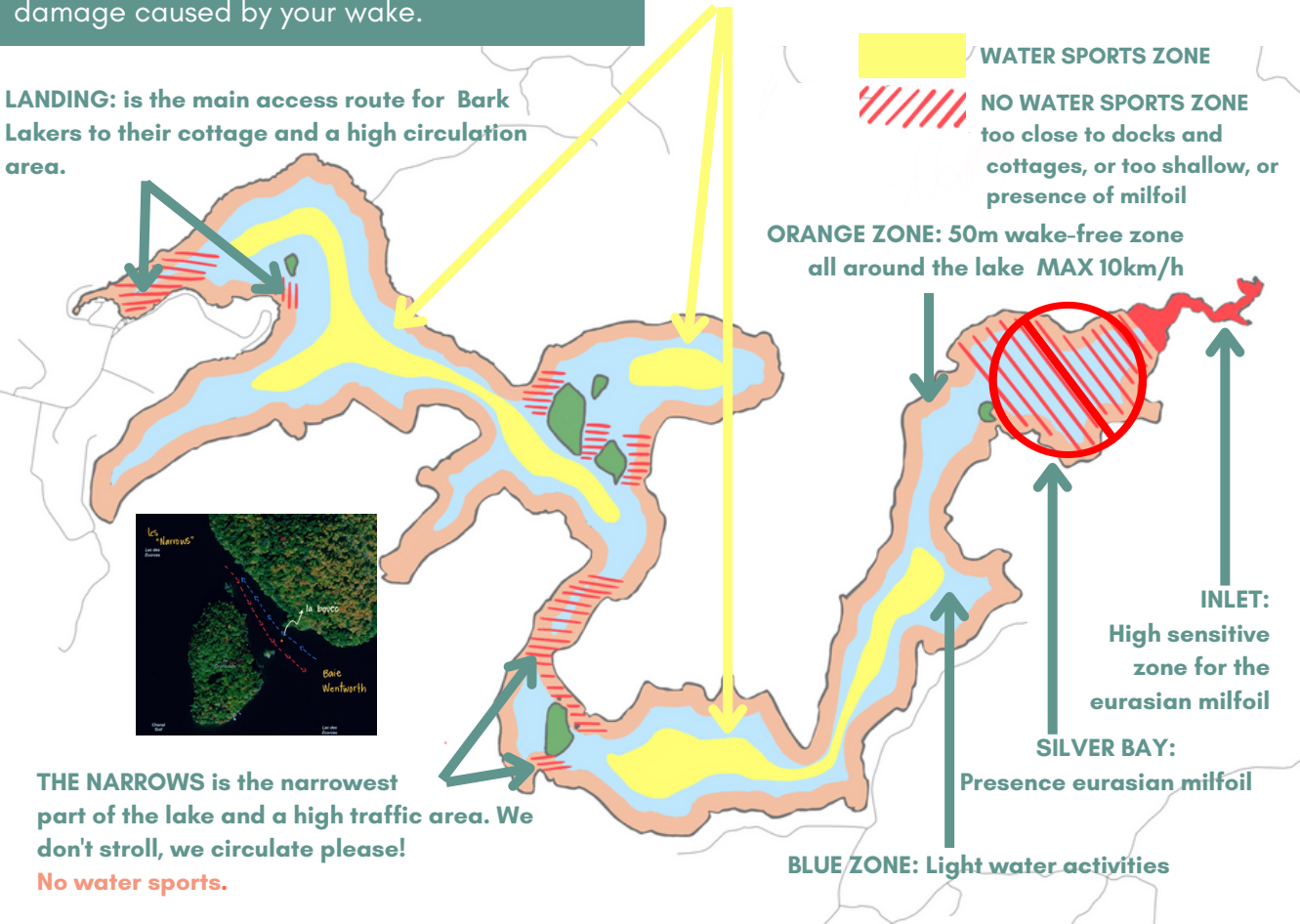
You must always have someone watching the person being pulled. This person cannot be the driver.

Seadoos, ballast boats (wakeboat) and the use of wave amplification systems are prohibited on Bark Lake.

No wakeboarding, no wakesurfing.

You are legally responsible for any injury or damage caused by your wake.

LANDING: is the main access route for Bark Lakers to their cottage and a high circulation area.



THE NARROWS is the narrowest part of the lake and a high traffic area. We don't stroll, we circulate please!
No water sports.

WATER SPORTS

As a community, when passing each other on the water, we wave at each other.

Repeated runs in front of the same cottages creates unwanted noise and excessive wakes. Vary your route frequently, limit your runs.

Bark Lake is narrow. Water skiing and tubing, which generate big waves, must be done more than 200 meters from the shore. ONLY YELLOW ZONES ALLOW IT

BARK LAKE
CODE OF ETHICS



BE SAFE, BE RESPECTFUL,
SHARE THE LAKE!

Bark Lake

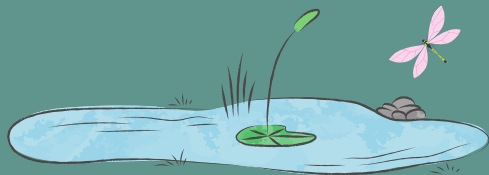
is a place of exceptional wild beauty and tranquility.

Our community is founded on the preservation and protection of the lake for present and future generations.

The Code of Ethics aims to:

- PROTECT THE ECOSYSTEM AND WATER QUALITY OF THE LAKE
- PREVENT INTRODUCTION AND SPREAD OF INVASIVE SPECIES
- FOSTER A SENSE OF COMMUNITY
- PROMOTE HARMONY, PEACE AND TRANQUILITY
- ENCOURAGE SAFE AND RESPECTFUL BOATING PRACTICES

Water quality is key to the health of our Lake and is a treasure for its residents and visitors. The Lake is our primary source of clean water for consumption and domestic use.



NO WASHING = NO LAUNCHING

Washing and inspecting boats is **ESSENTIAL** in the fight to prevent the spread of invasive plants such as Eurasian water-milfoil.

WASHING IS MANDATORY FOR ALL MOTORIZED AND NON-MOTORIZED WATERCRAFT.

Consult the municipality's website for the washing station schedule and more infos:

www.barkmere.ca/?page_id=2435

BOATING SAFETY

- One life jacket per passenger, including all water sports participants.
- Pleasure Card Operator Card is **MANDATORY**.
- Check the weather! On a lake, the weather changes quickly.
- Before each departure, check that you have the safety equipment as required by law : tc.canada.ca
- Driving while under influence is illegal.
- Navigation lights are **MANDATORY** in periods of reduced visibility and at night.

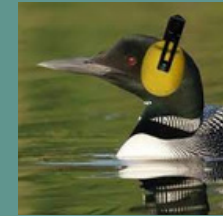
NOISE

NOISE POLLUTION DOES NOT HAVE ITS PLACE IN NATURE.

On a lake you can hear everything, keep the noise to a minimum!

Amplified sound should not be heard beyond the limits of your property.

Generators should be in an acoustic enclosure



LIMIT YOUR WAKE, GET YOUR BOAT TO PLANING SPEED QUICKLY!

1.DISPLACEMENT SPEED

This is the slowest speed and creates the least wake. The boat operates with the bow down in the water.



2.TRANSITION SPEED

Increasing power rises the bow, causing the stern to plow through the water. This creates the largest wake.



3.PLANING SPEED

At planing speed, the bow drops back down and only a little of the hull contacts the water.



It creates the least wake and should be used for travel.

KEEP YOUR DISTANCE

***** SWIMMERS, NON-MOTORIZED WATERCRAFT AND WILD ANIMALS HAVE PRIORITY*****



***** WAVES ACCELERATE THE EROSION OF THE SHORELINE, AND DAMAGE DOCKS & BOATS*****

