



HOME COMPOSTING ORGANIC WASTE

FOOD WASTE

- Fruits and vegetables (and their peels)
- Bread, pasta, and rice (without sauce, oil or fat)
- Egg shells (ideally crushed)
- Coffee grounds
- House plants (and soil)
- Coffee filters : tea and herbal tea bags



IN THE HOUSE

- Dead plants and dried flowers (without the pot)
- Shredded newspaper

IN THE GARDEN

- Grass clippings (small amounts)
- Garden waste
- Wilted flowers
- Leaves, straw, and hay (dry and in small amounts)
- Wood chips
- Soil



Do not put meat, fish or bones. This will attract animals.

Feed your composter with green waste (leftovers, vegetables and fruits, grass clippings, green plants, etc.) and brown waste (dead leaves, coffee grounds, brown paper, etc.)

For good composting, aerate every 2 weeks and moisten if too dry. The compost is ready when it's dark and textured like soil.



ULTIMATE WASTE

GARBAGE ITEMS ARE AT THE END OF THEIR LIFE CYCLE and cannot be deposited in the compost or recycle bin nor the ecocentre or at a second hand store (thrift shop) and are destined to landfill.

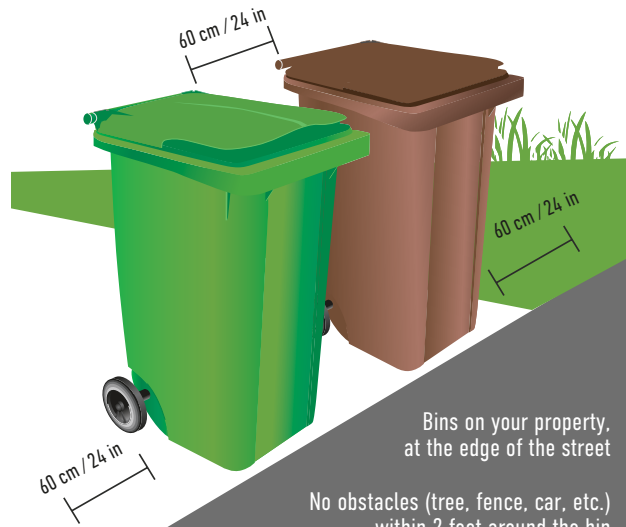
ACCEPTED ITEMS:

- Diapers
- Broken toys
- Brushes and mirrors
- Broken dishes and porcelaine
- Dishwashing gloves and sponges
- Plastic straws
- Plastic toothbrushes
- Plastics bags that are non-strechable with your thumb (chip bags, cracker and cookie bags, granola bar wrappers ...)
- All plastic compostable and biodegradable
- Etc.

HOW TO PLACE YOUR BIN AT THE CURBSIDE

Handles and wheels pointed towards the house

Bins side-by-side and separated by 2 feet



Bins on your property, at the edge of the street

No obstacles (tree, fence, car, etc.) within 2 feet around the bin

In winter, bins cleared of snow and lids not frozen



RECYCLABLE MATERIALS

CONTAINERS, PACKAGING, PRINTS IN BULK

CLEAN PAPER AND CARDBOARD

- Newspapers, flyers, and magazines
- Unsoiled brown paper
- Shredded paper (in a transparent bag) tied with a knot
- Unsoiled brown papers
- Cardboard boxes and packaging (undo the boxes)
- Phonebooks and books (without covers or binding)
- Milk, cream, and juice cartons (without straw)

PLASTICS

All containers and lids with the following numbers:



- All strechy plastic bags, stretchable packaging, and plastic film (tied together in a clear bag with a knot)

METAL

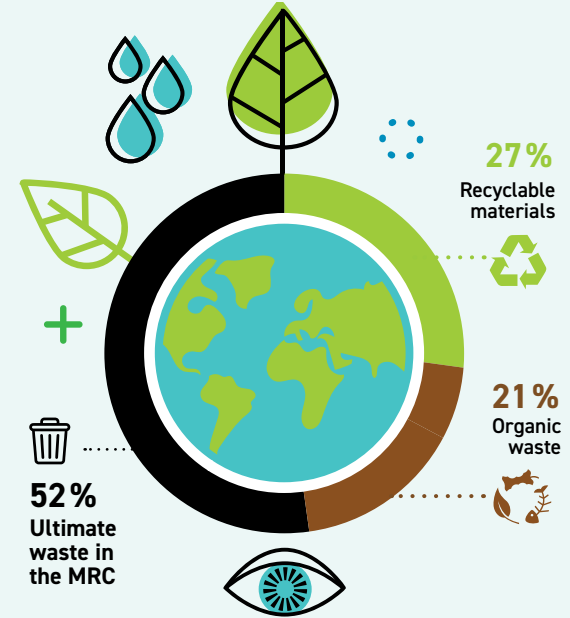
- Cans
- Beverage cans
- Aluminium foil
- Coat hangers (bundled)

GLASS

All glass bottles and containers of any colour



2024 COLLECTION CALENDAR



Still today, the majority of materials collected are waste.

Together, in a collective effort in reducing waste!



VILLE DE / TOWN OF

BARKMERE

819 681-3374

BARKMERE

2024 COLLECTION CALENDAR



Reserved for residents of the MRC des Laurentides (proof of residence required). Unlimited access for all materials, except construction, renovation and demolition materials: max. 26 visits/year.

- Recyclable materials
- Polystyrene and plastics
- Electronic products
- Household hazardous waste (HHW)
- Tires and car batteries
- Construction, renovation and demolition (CRD) materials
- Bulky goods
- Green waste (accepted only at ecocenters Mont-Tremblant, Sainte-Agathe-des-Monts and Complexe Environnemental de la Rouge).

Industries, businesses and institutions (ICI) are prohibited from bringing construction, renovation and demolition (CRD) materials to the ecocenters. Please go to a sorting center, for a fee.

HUBERDEAU ECOCENTRE

110, chemin de la Rouge

May 4 to November 30

Saturday: 8 a.m. to 2 p.m.

REGIONAL ECOCENTRE IN MONT-TREMBLANT

60, chemin de Brébeuf

January 1 to April 6 and September 16 to December 31

Tuesday to Friday: 9 a.m. to 4:30 p.m.

Saturday: 9 a.m. to 3 p.m.

April 7 to September 15

Monday to Friday: 9 a.m. to 4:30 p.m.

Saturday: 9 a.m. to 3 p.m.

Closed on statutory holidays

JANUARY						
M	T	W	T	F	S	
1	2	3	4	5	6	
8	9	10	11	12	13	
15	16	17	18	19	20	
22	23	24	25	26	27	
29	30	31	1	2	3	

FEBRUARY						
M	T	W	T	F	S	
29	30	31	1	2	3	
5	6	7	8	9	10	
12	13	14	15	16	17	
19	20	21	22	23	24	
26	27	28	29	1	2	

MARCH						
M	T	W	T	F	S	
26	27	28	29	1	2	
4	5	6	7	8	9	
11	12	13	14	15	16	
18	19	20	21	22	23	
25	26	27	28	29	30	

APRIL						
M	T	W	T	F	S	
1	2	3	4	5	6	
8	9	10	11	12	13	
15	16	17	18	19	20	
22	23	24	25	26	27	
29	30	1	2	3	4	

MAY						
M	T	W	T	F	S	
29	30	1	2	3	4	
6	7	8	9	10	11	
13	14	15	16	17	16	
20	21	22	23	24	25	
27	28	29	30	31	1	

JUNE						
M	T	W	T	F	S	
27	28	29	30	31	1	
3	4	5	6	7	8	
10	11	12	13	14	15	
17	18	19	20	21	22	
24	25	26	27	28	29	

JULY						
M	T	W	T	F	S	
1	2	3	4	5	6	
8	9	10	11	12	13	
15	16	17	18	19	20	
22	23	24	25	26	27	
29	30	31	1	2	3	

AUGUST						
M	T	W	T	F	S	
29	30	31	1	2	3	
5	6	7	8	9	10	
12	13	14	15	16	17	
19	20	21	22	23	24	
26	27	28	29	30	31	

SEPTEMBER						
M	T	W	T	F	S	
2	3	4	5	6	7	
9	10	11	12	13	14	
16	17	18	19	20	21	
23	24	25	26	27	28	
30	1	2	3	4	5	

OCTOBER						
M	T	W	T	F	S	
30	1	2	3	4	5	
7	8	9	10	11	12	
14	15	16	17	18	19	
21	22	23	24	25	26	
28	29	30	31	1	2	

NOVEMBER						
M	T	W	T	F	S	
28	29	30	31	1	2	
4	5	6	7	8	9	
11	12	13	14	15	16	
18	19	20	21	22	23	
25	26	27	28	29	30	

DECEMBER						
M	T	W	T	F	S	
2	3	4	5	6	7	
9	10	11	12	13	14	
16	17	18	19	20	21	
23	24	25	26	27	28	
30	31					

MOBILE ECOCENTRE

JUNE 14-15

AUGUST 9-10

At Labrosse landing

From 8 a.m. to 4:30 p.m.

819 681-3374, ext. 5101

ONLY THE FOLLOWING ITEMS ARE ACCEPTED:

Metal, construction, renovation and demolition (CRD) waste, household or garden furniture, table, chair, couch, mattress, box spring, bed frame, desk, bookcase, shelving. **Electronic waste without halocarbons:** stove, dishwasher, washer, dryer, water tank.

REFUSED ITEMS:

Electronic waste with halocarbons (CFCs), tires and Household Hazardous Wastes (HHW). These items must be taken to an Ecocentre.

RECYCLABLE MATERIALS

ULTIMATE WASTE

MOBILE ECOCENTRE

